

MINUTES OF THE MEETING  
OF THE  
MICHIGAN STATE UNIVERSITY  
BOARD OF TRUSTEES

September 9, 2011

President Simon called the meeting of the Board of Trustees to order at 9:25 a.m. in the Board Room.

Trustees present: Brian Breslin, Dianne Byrum (via phone), Joel Ferguson, Melanie Foster, Mitch Lyons, Faylene Owen, George Perles and Diann Woodard.

University officers present: President Simon, Provost Wilcox, Vice President Poston, Secretary Beekman, Vice President and General Counsel Noto, Vice Presidents Burnham, Gray, and Groves, Interim Vice Presidents Maybank and Swain, and Senior Advisor and Director Granberry Russell. Faculty liaisons present: William Anderson, Tim Levine, Mary Noel, and John Powell. Student liaisons present: Stefan Fletcher, Steven Marino, and Brieanne Mirjah.

All actions taken were by unanimous vote of the Trustees present, unless otherwise noted.

1. On a motion by Trustee Owen, supported by Trustee Foster, the **BOARD VOTED to approve** the agenda, including the revised Policy Committee agenda.
2. On a motion by Trustee Ferguson, supported by Trustee Foster, the **BOARD VOTED to approve** the minutes of the Board meeting of June 17, 2011.
3. President's Report

President Simon provided the following report to the Board.

A. New Academic Year

President Simon welcomed everyone to the first meeting of the academic year. She noted that MSU welcomed almost 10,000 new students to the community. The academic year opened with the hosting of Assistant Secretary of Education Dr. Eduardo Ochoa as part of the bus tour. Assistant Secretary Ochoa spent the morning speaking with leadership from MSU and the community.

B. MSU's Strampel Accepts Award from Governor of Yucatan

William Strampel, Dean of MSU's College of Osteopathic Medicine, visited the city of Merida, Mexico last month to accept an award on behalf of MSU and its Institute of International Health, for playing an integral role in gaining approval of the U.S. model of osteopathic medicine in the Mexican state of Yucatan.

C. MSU Honored for Student-Volunteer Program

MSU has earned a national award for its efforts to promote student volunteerism and engagement. MSU is among a number of U.S. universities that were named to the President's Higher Education Community Service Honor Roll. The award was launched in 2006 and annually recognizes institutions for their commitment to and achievement in community service. MSU was chosen based on the stability, growth and impact of its student-volunteer programs.

D. Origami Services American's Heroes

Origami Brain Injury Rehabilitation Center, a partnership between MSU and Peckham, Inc., is one of 21 facilities nationwide to be selected to participate in the Assisted Living Pilot Program for Veterans with Traumatic Brain Injury by the U.S. Department of Veterans Affairs. The program helps veterans with traumatic brain injuries who need long-term residential care by placing them in specialized residential assisted living facilities like Origami that are closer to their homes and families, thus avoiding institutional and hospital settings.

E. Broad Art Museum Appoints Min Jung Kim as Deputy Director

The Eli and Edythe Broad Art Museum has appointed Min Jung Kim as its deputy director. Throughout her career, which includes more than a decade's experience in international programming and planning for the Solomon R. Guggenheim Foundation, Ms. Kim has developed strategic alliances and collaborative initiatives with cultural institutions around the globe. Ms. Kim will be responsible for strategic planning and overseeing daily operations at the Art Museum.

F. MSU Offers First Graduate Certificate in Anti-Counterfeiting

MSU is now offering the nation's first graduate certificate in anti-counterfeiting and product protection criminology. The Anti-Counterfeiting and Product Protection Program in MSU's School of

Criminal Justice administers the new program. Students who successfully complete the course will be able to provide anti-counterfeiting and product-protection strategies for industry and agencies.

G. NSF & USAID Collaborative Grants

Jenny Olson, faculty member in the College of Communication Arts and Sciences, received one of the six Partnerships for Enhanced Engagement in Research (PEER) pilot project grants. USAID funded the pilot projects through PEER to explore research challenges related to ecosystems, climate change, seismology, hydrology and biodiversity in Tanzania, Bangladesh, Mali, Kenya and Burkina Faso.

H. MSU, Community to Commemorate 10<sup>th</sup> Anniversary of September 11

To commemorate the 10<sup>th</sup> anniversary of the September 11 attacks, MSU and the City of East Lansing are hosting several events through December on campus and throughout the community. President Simon said that these events will explore key messages related to the event, including the resilience that is brought about from a shock or tragedy; the tenacity and commitment to rebuilding in ways that do not simply replicate the way things were, but reflect how they need to be in the future; and the element of respect for the community. She thanked Director Granberry Russell for her work in organizing the events.

I. Jim Sumbler Retirement

Jim Sumbler has announced he will retire at the end of September after 39 years of service to MSU. Mr. Sumbler has been recording the Board of Trustees meetings for 18 years. He started at MSU in 1972, working primarily in film production for WKAR until 1995. President Simon thanked him for his work on behalf of MSU.

4. There was no public participation on issues germane to the agenda.

5. Personnel Actions

Provost Wilcox presented the following personnel actions:

Kirkland, David E., AY—Associate Professor, Departments of Writing, Rhetoric and American Culture; English, with Tenure, \$90,000, effective August 16, 2011.

Olds, Marshall C., AN—Professor, Department of Spanish and Portuguese, with Tenure, \$146,500, effective August 16, 2011.

VanPatten, Bill, AY—Professor, Department of Spanish and Portuguese, with Tenure, \$115,000, effective August 16, 2011.

Drake, Corey J., AY—Professor, Department of Teacher Education, with Tenure, \$87,500, effective August 16, 2011.

Tabaczynski, Rodney J., AY—Professor, Department of Mechanical Engineering, with Tenure, \$150,000, effective August 16, 2011.

Copple, Bryan L., AY—Associate Professor, Department of Pharmacology and Toxicology, with Tenure, \$105,000, effective August 16, 2011.

Noe, Kevin P., AY—Professor, College of Music, with Tenure, \$140,000, effective August 16, 2011.

Thomas, Reginald J., AY—Professor, College of Music, with Tenure, \$80,000, effective August 16, 2011.

Adami, Christoph C., AY—Professor, Department of Microbiology and Molecular Genetics, with Tenure, \$155,000, effective August 16, 2011.

Krajcik, Joseph, AN—Professor, Deans' Offices, Colleges of Natural Science; Education; Department of Teacher Education, with Tenure, \$224,500 effective August 16, 2011.

Jussaume, Raymond A., AN—Professor, Department of Sociology, with Tenure, \$185,000, effective August 16, 2011.

Jackson, Linda A., AY—Professor, Departments of Psychology; Computer Science and Engineering, to add title of Faculty Grievance Official, Faculty Grievance Office, with a change in salary to \$129,535, effective September 1, 2011.

The Provost and President recommend approval of the University Distinguished Professor designation for the faculty member listed below, to be effective September 9, 2011.

Barbara Schneider, Department of Counseling, Education Psychology and Special Education.

Trustee Owen **moved to approve** the recommendations, with support from Trustee Foster.

**THE BOARD VOTED to approve** the recommendations.

6. Gifts, Grants, and Contracts

It was recommended that the Board of Trustees approve the Gift, Grant and Contract Report for the period of May 24, 2011 through August 26, 2011. The report is a compilation of 738 Gifts, Grants and Contracts, 69 Consignment/Non-Cash Gifts, with a total value of \$128,286,122.

Trustee Ferguson **moved to approve** the recommendation, with support from Trustee Foster.

**THE BOARD VOTED to approve** the recommendation.

Vice President Gray introduced Dr. Sheng Yang He, Professor in the College of Natural Science. Dr. He made a presentation to the Board on the molecular basis of infectious disease. (Appendix A)

7. Finance Committee

Trustee Breslin presented the Trustee Finance Committee Report and recommendations.

A. External Investment Advisory Subcommittee Member Appointment/Extension

It was recommended that the Board of Trustees appoint Randy Cowen as an outside member of the Investment Advisory Subcommittee for a three-year term from January 1, 2012 through December 31, 2014, and that the Board of Trustees extend the appointment of Phil Zecher as an outside member of the Investment Advisory Subcommittee through December 31, 2013.

Trustee Breslin **moved to approve** the recommendation, with support from Trustee Owen.

**THE BOARD VOTED to approve** the recommendation.

B. Fund Functioning as an Endowment—Debate Team Fund

It was recommended that the Board of Trustees establish a fund functioning as an endowment entitled Debate Team Fund.

Trustee Breslin **moved to approve** the recommendation, with support from Trustee Owen.

**THE BOARD VOTED to approve** the recommendation.

- C. Fund Functioning as an Endowment—The J. Willard and Alice S. Marriott Foundation Culinary Business Learning Lab Maintenance, Replacement, and Repairs Fund

It was recommended that the Board of Trustees establish a fund functioning as an endowment entitled The J. Willard and Alice S. Marriott Foundation Culinary Business Learning Lab Maintenance, Replacement, and Repairs Fund.

Trustee Breslin **moved to approve** the recommendation, with support from Trustee Foster.

**THE BOARD VOTED to approve** the recommendation.

- D. Authorization to Plan—McDonel Hall—River Trail Neighborhood Engagement Center

It was recommended that the Board of Trustees authorize the Administration to plan for the project entitled McDonel Hall—River Trail Neighborhood Engagement Center.

Trustee Breslin **moved to approve** the recommendation, with support from Trustee Owen.

**THE BOARD VOTED to approve** the recommendation.

- E. Authorization to Plan—Bio Engineering Facility

It was recommended that the Board of Trustees authorize the Administration to plan for the project entitled Bio Engineering Facility.

Trustee Breslin **moved to approve** the recommendation, with support from Trustee Lyons.

**THE BOARD VOTED to approve** the recommendation.

- F. Authorization to Plan—Steam Distribution—West Circle Steam Loop

It was recommended that the Board of Trustees authorize the Administration to plan for the project entitled Steam Distribution—West Circle Steam Loop.

Trustee Breslin **moved to approve** the recommendation, with support from Trustee Foster.

**THE BOARD VOTED to approve** the recommendation.

G. Authorization to Plan—Steam Distribution—Eustace Cole Hall to Mason Hall

It was recommended that the Board of Trustees authorize the Administration to plan for the project entitled Steam Distribution—Eustace-Cole Hall to Mason Hall.

Trustee Breslin **moved to approve** the recommendation, with support from Trustee Owen.

**THE BOARD VOTED to approve** the recommendation.

8. Policy Committee

Trustee Woodard presented the Trustee Policy Committee Report and recommendations.

A. Student Liaison to the Board of Trustees Policy Amendment

It was recommended that the Board of Trustees modify the policy for the appointment of Student Liaisons to the Board of Trustees, to reduce the number of student representatives from the Associated Students of Michigan State University (ASMSU) to one and to add a student representative from the Residence Halls Association (RHA), as shown on the Attachment hereto, and that the Board of Trustees invite the Provost of ASMSU or his/her designee to attend meetings of the Board of Trustees and to participate in a role similar to that of a liaison through the conclusion of Spring Semester 2012.

Trustee Woodard **moved to approve** the recommendation, with support from Trustee Foster.

**THE BOARD VOTED to approve** the recommendation.

B. Approval of Contract Terms:

It was recommended that the Board of Trustees approve the execution of a license agreement with *Drawbridge, LLC* consistent with earlier public notice given at a Board meeting and with the "License Agreement Term Sheet" presented to the Board for inclusion in its minutes. (Appendix B)

It was recommended that the Board of Trustees approve the execution of a testing agreement with *Retia Medical, LLC* consistent with earlier public notice given at a Board meeting and with the "Testing Agreement Term Sheet" presented to the Board for inclusion in its minutes. (Appendix C)

It was recommended that the Board of Trustees approve the execution of a license agreement with *Retia Medical, LLC* consistent with earlier public notice given at a Board meeting and with the "License Agreement Term Sheet" presented to the Board for inclusion in its minutes. (Appendix D)

It was recommended that the Board of Trustees approve the execution of a publishing contract with Dr. Adesoji Adelaja and Dr. Mark Wyckoff, consistent with earlier public notice given at a Board meeting and with the "Publishing Contract Term Sheet" presented to the Board for inclusion in its minutes. (Appendix E)

It was recommended that the Board of Trustees approve the execution of a publishing contract with Dr. William B. Tyrrell, consistent with earlier public notice given at a Board meeting and with the "Publishing Contract Term Sheet" presented to the Board for inclusion in its minutes. (Appendix F)

Trustee Woodard **moved to approve** the recommendations, with support from Trustee Breslin.

**THE BOARD VOTED to approve** the recommendations.

C. Opening of the School Year

Provost Wilcox presented the Preliminary Enrollment Report. (Appendix G)

Trustee Byrum exited the meeting.

9. Audit Committee

Trustee Perles said that the Audit Committee received an overview of the Office of Internal Audit and a review of the audit plan for the 2011-12 fiscal



year which was provided to the Committee in June 2011. Internal Audit Director Tom Luccock reviewed the areas of risk for the University and audit foci for this year.

The Committee also reviewed compliance with NCAA rules by the Department of Intercollegiate Athletics. Athletic Director Mark Hollis continues to expect an athletic program with a strong compliance environment. The athletics compliance unit is led by Associate Athletic Director Jennifer Smith. She reports primarily to the Athletic Director, but also reports directly to the General Counsel, which strengthens her position. The athletic compliance unit leads with a strong proactive and educational approach.

An update was also provided by staff on ASMSU accounting and reporting within the University.

#### 10. Trustees Comments

Trustee Ferguson said that he was looking forward to a successful academic year for students, faculty and staff.

Trustee Owen asked Dr. Powell, faculty liaison to the Board, to comment on the Faculty Liaison meeting earlier in the morning.

Dr. Powell said that Academic Governance was working on a number of projects, including the student assessment taskforce report. He anticipates a busy academic year for the various committees and appreciates the opportunity to discuss issues with the Board.

Trustee Lyons welcomed Ms. Mirjah to the student liaison committee. He asked Mr. Marino, student liaison to the Board, to share information about an ASMSU initiative involving CATA.

Mr. Marino said that ASMSU is examining the feasibility of developing a mobile application enabling students to track locations of CATA busses on campus with GPS technology, allowing students to determine the quickest route to their destination.

Trustee Foster welcomed Sarah Pomeroy, the RHA President, as a liaison to the Board.

#### 11. Public Participation on Other Issues

##### A. Renovation of Chittenden Hall

Ms. Shannon Demlow, MSU graduate student, asked the Board to support the renovation of Chittenden Hall as a graduate resource center. She stated that the campus contains many historic buildings, including Chittenden Hall. The building is currently empty. Ms. Demlow suggested that an expanded graduate school would give MSU a solid base for recruiting graduate and professional students and unite the resources to support those students. In addition, a resource center would provide a place for students to interact with others.

12. Request to Adjourn

On a motion by Trustee Owen, supported by Trustee Ferguson, **THE BOARD VOTED to adjourn** at 10:35 a.m.

Respectfully submitted,



William R. Beekman  
Secretary of the Board of Trustees

**RESEARCH  
PRESENTATION  
TO THE MSU BOARD OF TRUSTEES**

**SEPTEMBER 9, 2011**

**SHENG YANG HE  
COLLEGE OF NATURAL SCIENCE**

Facilitated by the Office of the Vice President for  
Research and Graduate Studies

## Molecular basis of infectious disease



### Two basic questions:

1. How do pathogens manipulate plants to cause disease?
2. Can we disable pathogenesis for disease control?



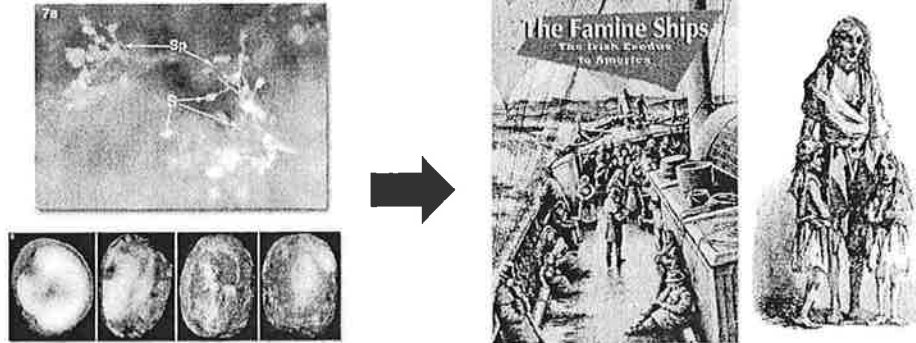
### Some more background....



## Why do we study plant disease?

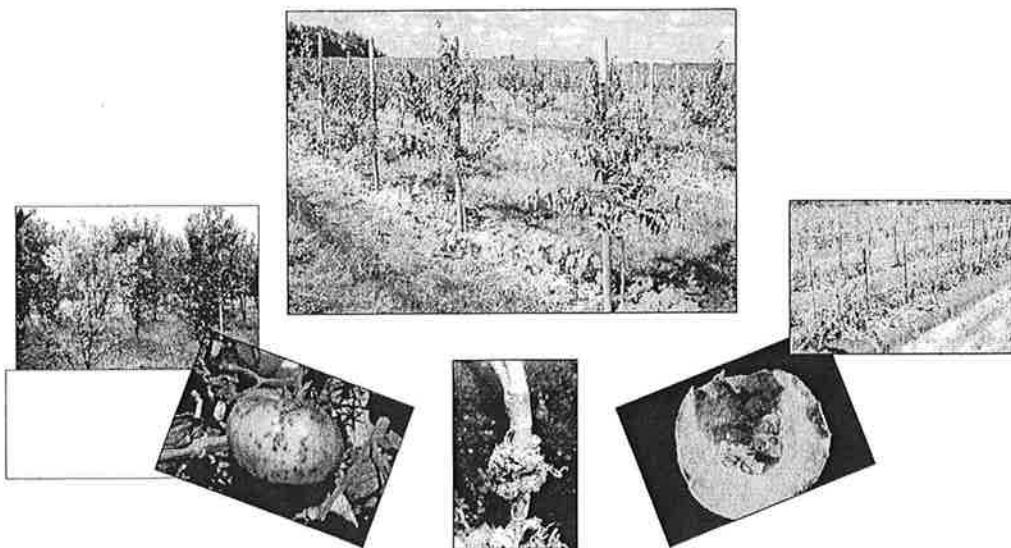
> An important problem in plant science

### The Great Irish Potato Famine (1840s)



<http://www.potatodiseases.org/lateblight.html>

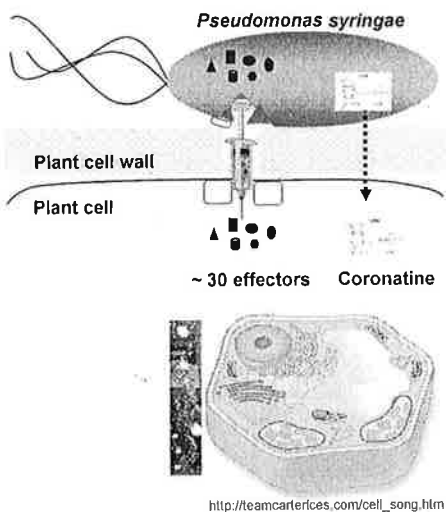
### Fire blight epidemic in 2000 in southwest Michigan (\$25.5 million loss)



## We study a model system...



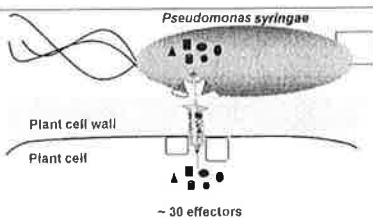
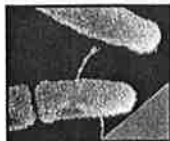
Arabidopsis speck disease



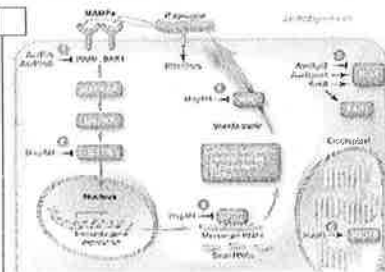
## Project 1. Type III secretion system and effectors

### ➤ Type III secretion system:

Roine et al., 1997, *PNAS*  
Wei et al., 2000, *PNAS*  
Jin and He, 2001, *Science*

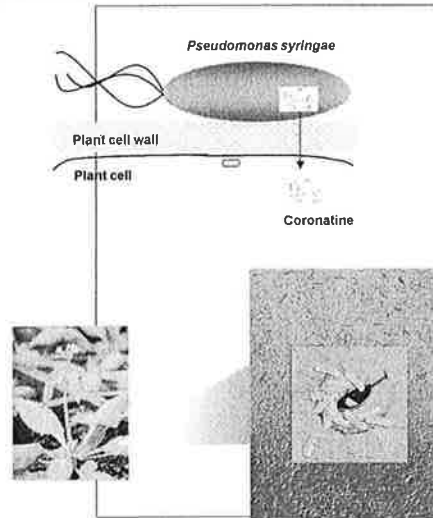


### ➤ Effector suppress plant immune response



Hauck et al., 2003, *PNAS*  
DeRoy et al., 2004, *PNAS*  
Boller and He (2009) *Science*

## Project 2. Function of coronatine toxin

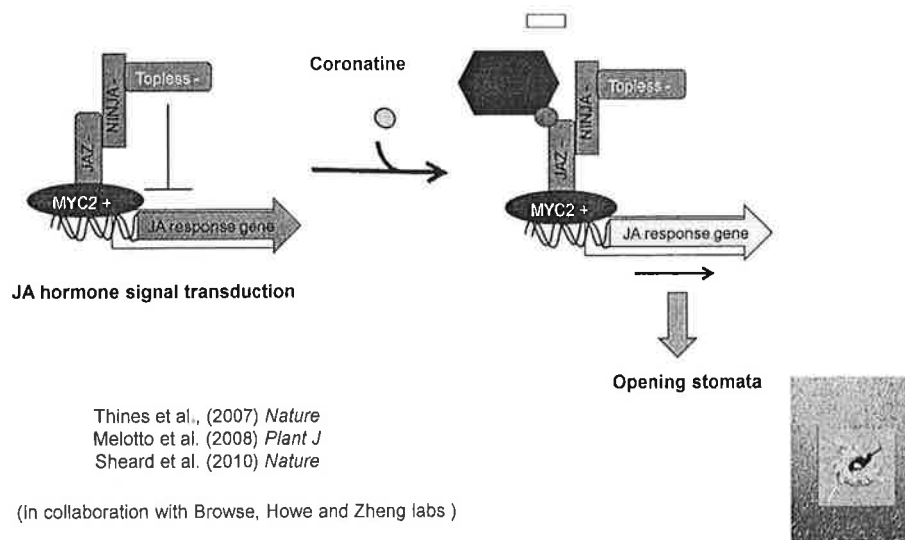


Melotto et al. (2006) *Cell*

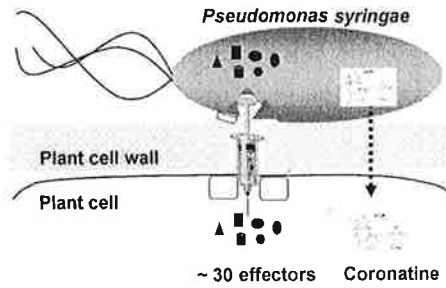
Zeng et al. (2011) *PLoS Pathogens*

## We figured out how coronatine act at the molecular level

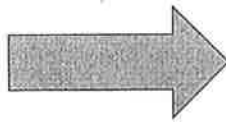
➤ Coronatine manipulates the jasmonate (JA) hormone signal transduction system



### 3. New project: novel disease control strategies



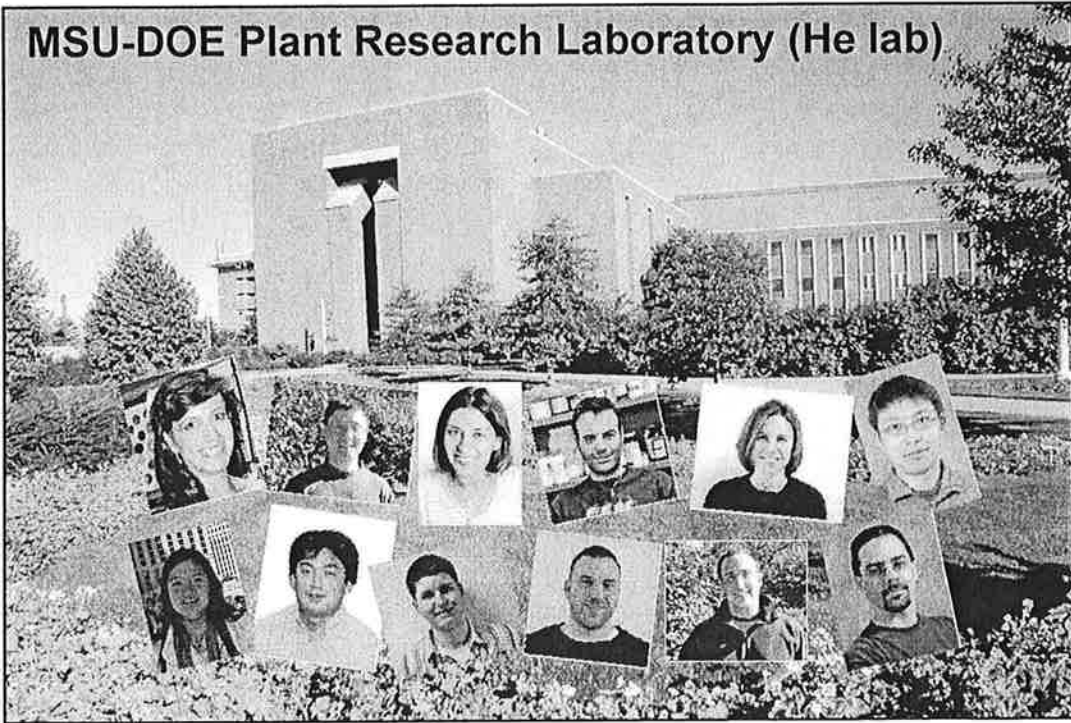
### Molecular basis of infectious disease



- Two basic questions:**
1. How do pathogens manipulate plants to cause disease?
  2. Can we disable pathogenesis for disease control?



**MSU-DOE Plant Research Laboratory (He lab)**



## LICENSE AGREEMENT TERM SHEET

**Party:** Drawbridge, LLC

**License:** Exclusive License with equity on the Technology in the field of education

**Term:** From the effective date of the license agreement extending to the expiration of the last to expire of the patents.

**Technology:** MSU Invention Disclosure Nos. TEC2009-0065 “Social Writing Platform”; TEC2010-0039 “Method for Creating and Conducting Online Writing Review”; TEC2010-0055 “Garden Workstreaming”; TEC2012-0022 “Activity-Based Instructional Writing Game Engine”; including U.S. Patent Application Nos. 13/045,644 and 13/045,632.

The parties may add or remove technologies under the agreement, including improvements generated under a separate sponsored research agreement, provided that the change does not affect the financial consideration of the parties or the nature or extent of any pecuniary interest of MSU personnel.

**Technology’s Potential Commercial Utilization:**

Software and associated services to K-12 and higher education markets for coordinating and evaluating peer review of classroom writing skills.

**Payment Terms:** Payment of \$10,000 due 30 days after effective date of agreement; royalty ranging from 2.5% to 5.0% on Net Sales; reimbursement of prior patent costs to be paid before 2015; patent costs after effective date to be paid as incurred; MSU will receive a 20% membership interest in Drawbridge, LLC upon the effective date of agreement.

**Services Provided:** By MSU to Drawbridge, LLC: None under contemplated agreement  
By Drawbridge, LLC to MSU: None under contemplated agreement

**Organization Type:** Michigan limited liability company

**Personnel Interest:** Dr. Jeffrey Grabill, a Professor in the Department of Writing, Rhetoric and American Cultures, Dr. William Hart-Davidson, an Associate Professor in the Department of Writing, Rhetoric and American Cultures, and Mr. Michael McLeod, an Academic Specialist in the Department of Writing, Rhetoric and American Cultures, and their families own or have options to buy an ownership interest of more than 1% of Drawbridge, LLC. Drs. Hart-Davidson and Grabill are also Board members of Drawbridge, LLC.

**TESTING AGREEMENT TERM SHEET**

**Party:** Retia Medical, LLC (formerly Hemodynamic Monitoring Solutions, LLC)

**Contract:** Agreement between Retia Medical, LLC and MSU  
“Comparative Test of Cardiac Output Monitoring Devices”

**Term:** October 1, 2011 to June 30, 2012

**Payment Terms:** MSU contract total: \$149,921

**Services Provided:** By MSU to Retia Medical, LLC: testing of different devices to monitor cardiac output  
  
By Retia Medical, LLC to MSU: None under contemplated agreement

**Use of University Facilities/Personnel:**  
Use of MSU facilities/personnel by Retia Medical, LLC provided at relevant rates for industrial research

**Organization Type:** Delaware limited liability company

**Personnel Interest:** Dr. Ramakrishna Mukkamala, an Associate Professor in the Department of Electrical and Computer Engineering, and his family own or have options to buy an ownership interest of more than 1% of the company. Dr. Mukkamala is also a member of Retia Medical, LLC.

**LICENSE AGREEMENT TERM SHEET**

**Party:** Retia Medical, LLC (formerly Hemodynamic Monitoring Solutions, LLC)

**License:** Exclusive license on Patent Rights in the field of hemodynamic monitoring

**Term:** From the effective date of the agreement extending to the expiration of the last to expire of the patents

**Technology:** MSU Invention Disclosure Nos. TEC2005-0010 “Method and Apparatus for Continuous Monitoring of Cardiac Output and Left Atrial Pressure”; TEC2006-0077 “Methods and Apparatus for Determining Ejection Fraction”; TEC2008-0063 “Methods and Apparatus For Determining Circulatory Pressures and Flows”; TEC2010-0098 “Methods and Apparatus for Determining Arterial Pulse Wave Velocity”; TEC2010-0103 “Methods and Apparatus for Determining Cardiac Output”; including U.S. Patent Nos. 7,666,144; 7,815,578 and U.S. Patent Application Nos. 12/646,362; 12/225,133; 60/782,724; 12/993,544; 61/128,956; 31/372,958; 10/667,956; 12/903,915.

**Technology’s Potential Commercial Utilization:**  
Cardiac output monitoring

**Payment Terms:** Payment of \$10,000 within 30 days of signing; royalty of 4.5% on net sales; 50% on all sublicensing revenues; minimum annual royalty payments of \$20,250 beginning in calendar year 2016; reimbursement of prior patent costs beginning in 2013 with payment of \$50,000 and remaining balance paid in 2014; patent costs incurred after effective date of agreement paid as incurred.

**Services Provided:** By MSU to Retia Medical, LLC: None under contemplated agreement  
By Retia Medical, LLC to MSU: None under contemplated agreement

**Organization Type:** Delaware limited liability company

**Personnel Interest:** Dr. Ramakrishna Mukkamala, an Associate Professor in the Department of Electrical and Computer Engineering, and his family own or have options to buy an ownership interest of more than 1% of the company. Dr. Mukkamala is also a member of Retia Medical, LLC.

## PUBLISHING CONTRACT TERM SHEET

- Party:** Dr. Adesoji Adelaja and Dr. Mark Wyckoff
- Project Description:** Co-editorship of a book tentatively titled *School Siting and Healthy Communities: Why Where We Invest in School Facilities Matters*.
- Term:** Initial manuscript delivery in or before September, 2011.
- Contractual Terms:** MSU Press standard publishing terms and conditions apply. Dr. Adelaja and Dr. Wyckoff will each receive 2% of net revenues from all net copies sold of all editions, plus five (5) free copies of each edition, and will receive the right to purchase for personal use, on a non-returnable basis, copies of the work at a 40% discount from the retail rate.
- Services Provided:** By MSU to Dr. Adelaja and Dr. Wyckoff:  
Publication of the book.  
By Dr. Adelaja and Dr. Wyckoff to MSU:  
Co-editorship of the work.
- Use of University Facilities/Personnel:**  
None under contemplated agreement.
- Organization Type:** Dr. Adelaja and Dr. Wyckoff will each be acting as an individual scholar.
- Personnel Interest:** Agreement will be directly with Dr. Adelaja and Dr. Wyckoff, who, together with a similarly compensated external co-editor, collectively will receive the totality of the contemplated consideration.

## PUBLISHING CONTRACT TERM SHEET

- Party:** Dr. William B. Tyrrell
- Project Description:** Authorship of a book tentatively titled *The Sacrifice of Socrates: Athens, Plato, Girard*.
- Term:** Initial manuscript delivery in September 2011.
- Contractual Terms:** MSU Press standard publishing terms and conditions apply. Dr. Tyrrell will receive 5% of net revenues from the first 1,000 net copies sold of all editions, plus 7.5% of net revenues from the sales in excess of 1,000 net copies sold of all editions, plus ten (10) free copies of each edition, and will receive the right to purchase for personal use, on a non-returnable basis, copies of the work at a 40% discount from the retail rate.
- Services Provided:** By MSU to Dr. Tyrrell:  
Publication of the book.  
By Dr. Tyrrell to MSU:  
Authorship of the work.
- Use of University Facilities/Personnel:**  
None under contemplated agreement.
- Organization Type:** Dr. Tyrrell will be acting as an individual scholar.
- Personnel Interest:** This contract will be directly with Dr. Tyrrell, who will receive the totality of the contemplated consideration.

# Preliminary Fall Enrollment Background Information



## Preliminary Enrollment Background Information

- Enrollment planning occurs within an environment of increasing uncertainty
  - Regional as well as national economic change
  - State and federal modifications to student financial aid programs
  - Common Admissions Application promotes student application to increasing numbers of institutions
- MSU total enrollment targeted to between 46,000 and 48,000
- MSU freshmen class targeted between 7,200 and 7,300





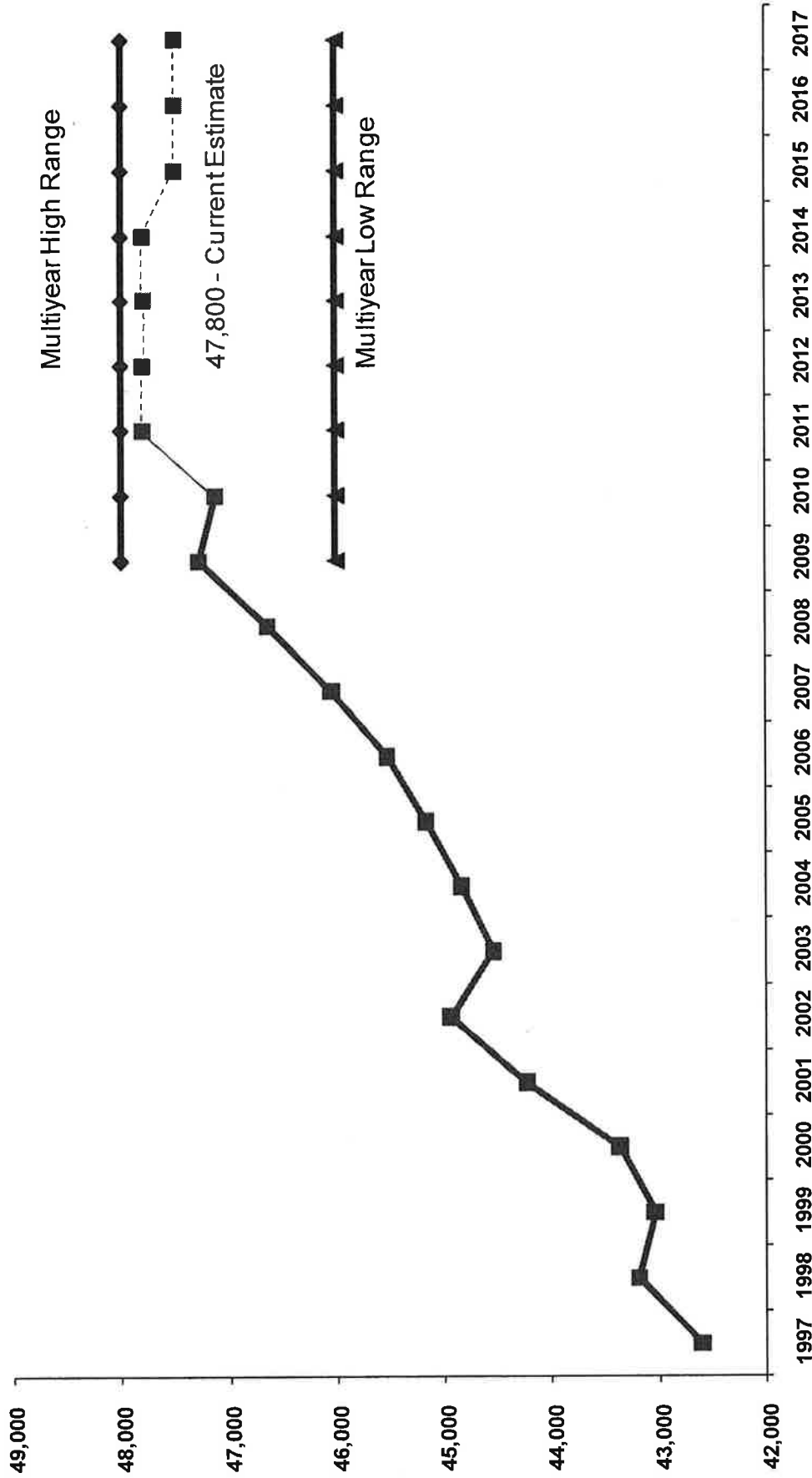
## Preliminary Enrollment Background Information

- Mid-year, MSU enrollment target increased on a one time basis to between 7,300 to 7,400, to help stabilize overall enrollment in face of:
  - Fall 2010 actual, slightly less than target
  - Continuing economic pressure
  - Faster time to degree
- Intensified recruitment of nonresident students while maintaining MSU's long-term 5 percent share of state of Michigan 12<sup>th</sup> grade enrollments

## Preliminary Outcomes

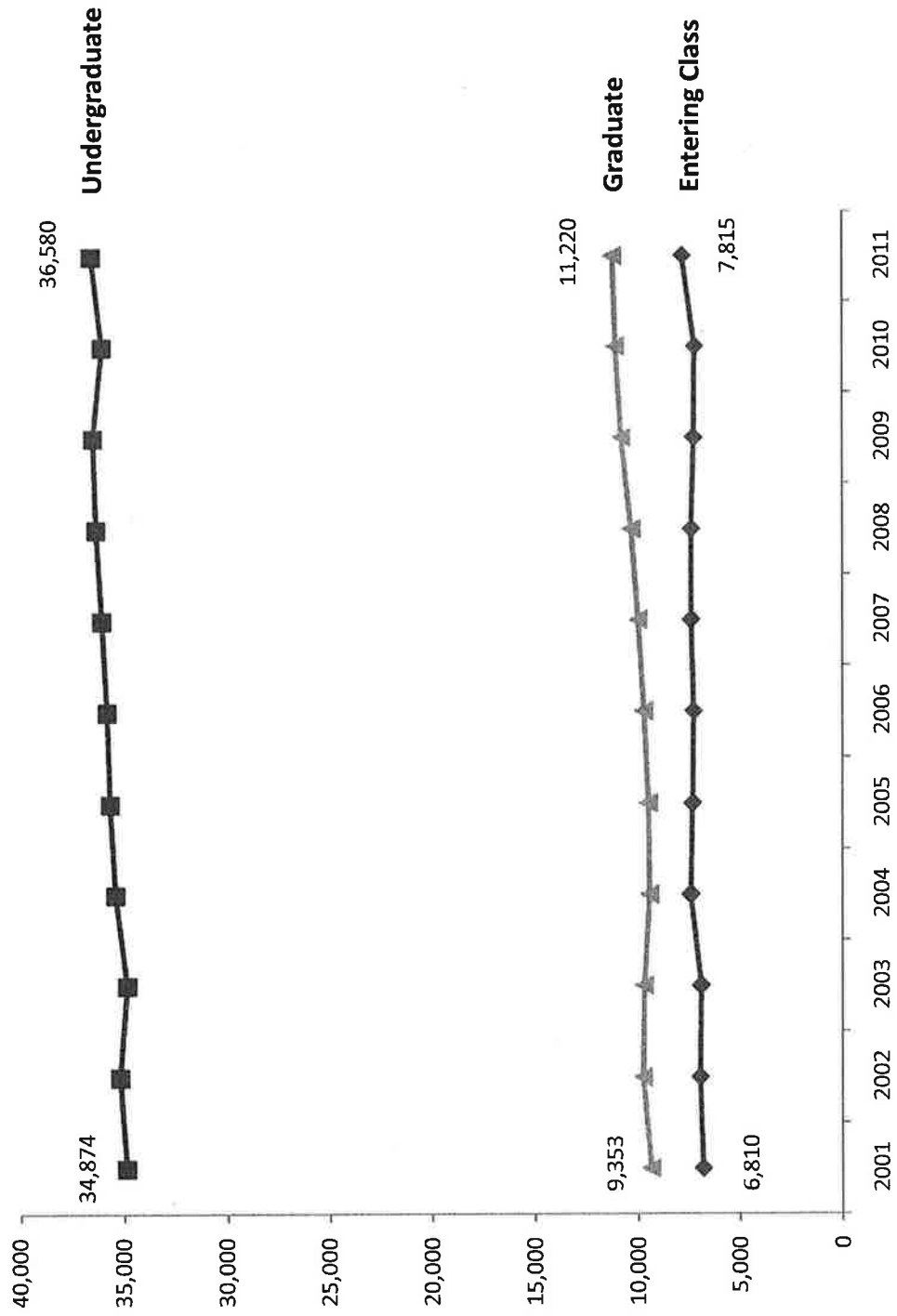
- ✓ Overall enrollment at 47,800, up by approximately 2 percent from previous year total of 47,100
- ✓ Approximately 300 students above 47,500 planning target, highlights MSU's continued momentum
- ✓ Maintained preparation of the entering class in middle range of Big Ten
- ✓ Continue to attract diverse socioeconomic range of students, number of students receiving Pell grants stable at 24 percent
- ✓ Stable graduate enrollment

# Total Enrollment

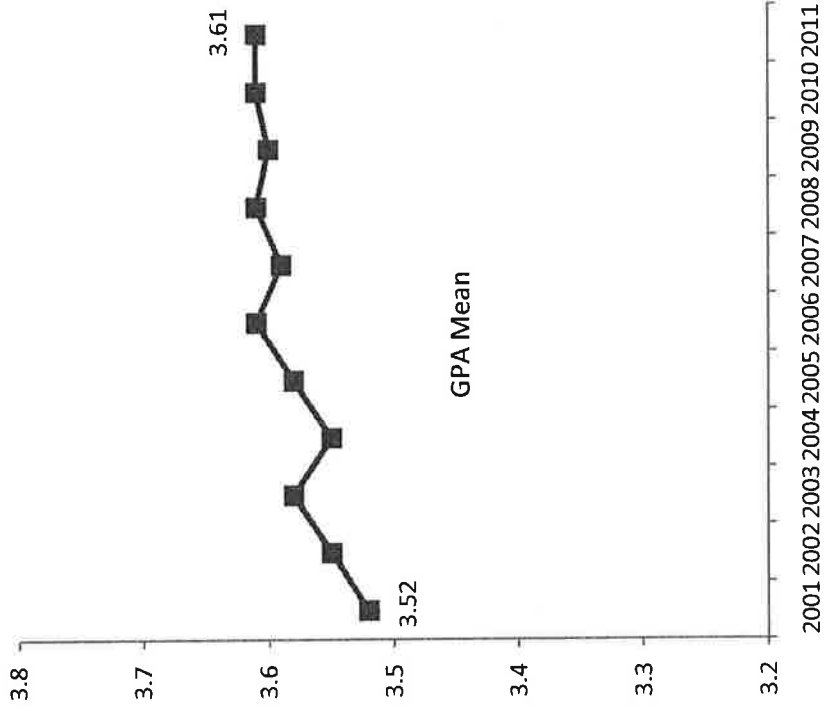
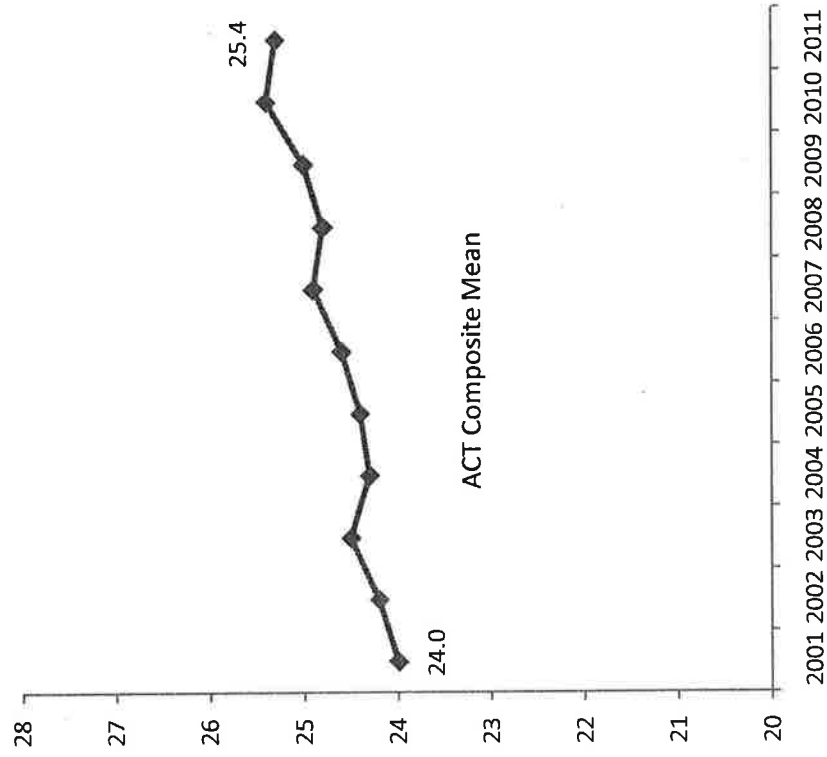


Scale enlarged to show trends over time

# Enrollment By Level



# First Time Undergraduate Academic Profile



## Preliminary MSU Enrollment Summary By Level (Rounded to Nearest 100 Students)

	Actual Fill 2010	2011 Target	Prelim. 2011 Estimate	Change from Target
First Time*	7,174	7,400	7,800	400
Total Undergraduate	36,058	36,300	36,600	300
Total Graduate	8,898	8,900	8,900	0
Total Grad. Professional	2,175	2,300	2,300	0
<b>Total</b>	<b>47,131</b>	<b>47,500</b>	<b>47,800</b>	<b>300</b>

\*Included with undergraduate level



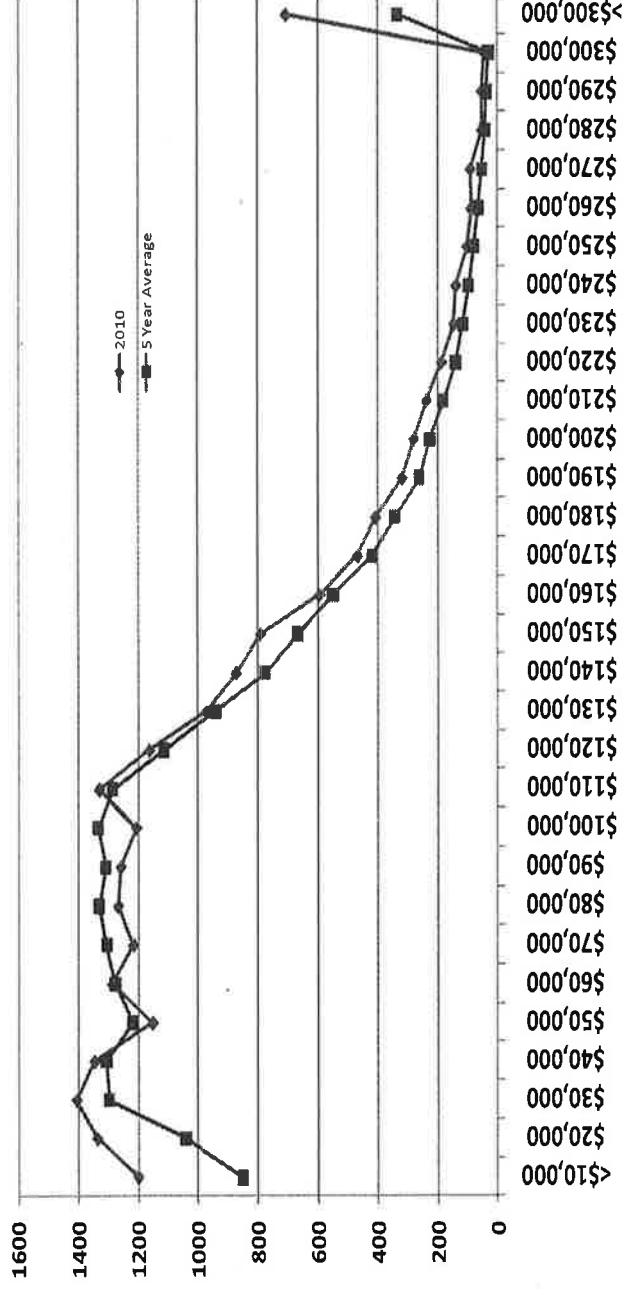
# MSU – State Enrollments

Fall	<u>Michigan State University</u>			<u>State of Michigan</u>		MSU % of State
	Entering Class	Non-Mi	Mi	12th Grade Enroll		
2007	7,373	1,202	6,171	126,380		5%
2008	7,378	1,409	5,969	126,352		5%
2009	7,255	1,516	5,739	125,840		5%
2010	7,206	1,407	5,799	122,942		5%
2011	7,815	1,905	5,910	122,942		5%



# MSU Preserves Student Access

- 74% of students from households with incomes less than \$125,000
- 75% of students receive some form of aid
- 24% of undergraduates receive a Pell grant
- General fund aid up 300% over decade, exceeds \$100M in 2011-12



2010-11 calculation will be updated for 2011-12 in November 2011



**MICHIGAN STATE UNIVERSITY**  
**Preliminary Enrollment Report for the Board of Trustees**  
**September 9, 2011**

Fall enrollment figures are preliminary at this time. The official count will occur at quarter of semester on the evening of September 26, 2011. The following represent our best current estimates. This year's enrollment is expected to be within the range of 47,800, plus or minus 100 students. This data depicts an increase over the prior year's total of 47,131 and represents the high end of MSU's long term enrollment range of between 46,000 and 48,000. A final report will be circulated after the quarter of semester statistics are known.

Entering Class

- Demand for admission to MSU remains strong. A total of 28,547 applications were received this year. The entering first time Fall class of approximates 7,775.
- Grade points and test scores are similar to the last four entering classes. The high school GPA 25<sup>th</sup> to 75<sup>th</sup> percentile range is 3.4 to 3.9. The ACT 25<sup>th</sup> to 75<sup>th</sup> percentile range is 23 to 27.
- New College Achievement Admissions Program (CAAP) enrollment totals approximately 635 students. The program comprises about 8.1 percent of the entering class.
- First time Honors College enrollment is estimated at 485 students. The Academic Scholars Program is enrolling approximately 160 new students this year. Together the first time Honors and Academic Scholars programs comprise approximately 8.3 percent of the entering class.
- Michigan enrollments for the entering class total approximately 76 percent.
- New transfer enrollment is approximately 1,530 students.
- The MSU entering class and transfer enrollment total approximately 9,345 students.

Undergraduate and Graduate Students

- The proportion of female students to total undergraduate enrollment is expected to be approximately 52 percent.
- The resident proportion of total undergraduates is approximately 82 percent.

## Preliminary Enrollment Report Page 2.

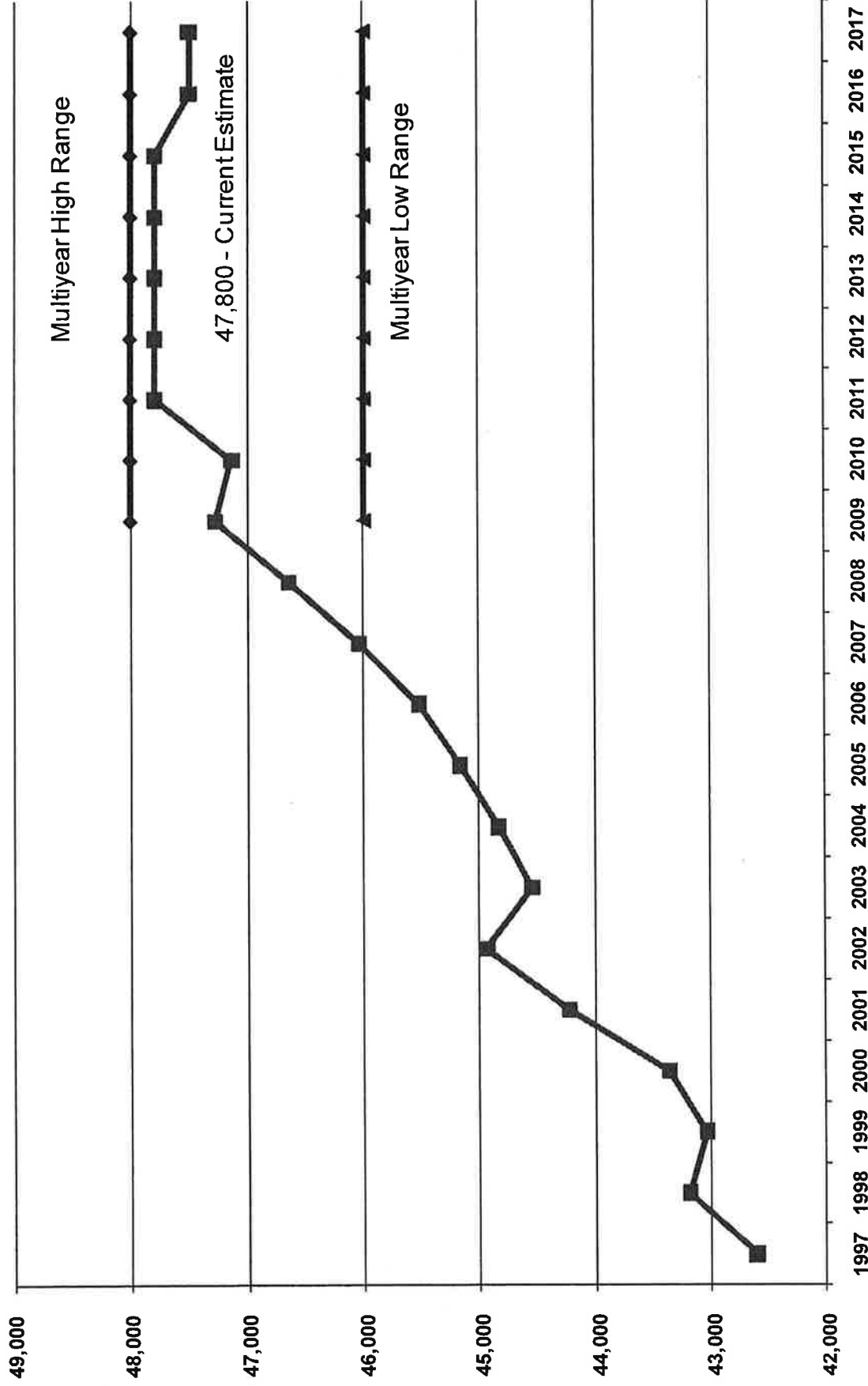
- Total undergraduate enrollment is estimated to be 36,580.
- At the graduate level, there are approximately 1,770 new students at the master's and doctoral levels.
- New graduate-professional enrollment totals approximately 620 students, which is consistent with the enrollment plan for the medical schools.
- Total graduate enrollment, including graduate professional students, is expected to approximate 11,220 students.

### University

- This year's undergraduate entering class is expected to include 1,390 students of color, approximately 20.4 percent of the domestic total.
- Total university enrollment for students of color is estimated at 7,830 students or 18.7 percent of the domestic student body total.
- The enrollment mix between undergraduate, graduate and graduate professional students is expected to be 76.5 percent, 18.6 percent, and 4.9 percent, respectively.
- It is anticipated that the colleges of Social Science, the Broad College of Business and Natural Science will have the largest enrollments as of the official enrollment count date.
- The MSU College of Law new fall enrollment (full and part time) totals approximately 307 students. Total enrollment is projected at 961 students.

Final enrollment data will be provided following the official count at the end of September.

# Total Enrollment



**FALL SEMESTER 2011  
PRELIMINARY  
ENROLLMENT REPORT  
MICHIGAN STATE UNIVERSITY**



# TABLE OF CONTENTS

1. Table of Contents
2. Fall Semester Total Enrollment Trend
3. Entering Class Enrollment Mix
4. First Time Undergraduate Apps, Admits and Enrollments
5. First time Undergraduate Academic Profile
6. First time Undergraduate Academic Profile - Lower Quartile
7. New CAAP as a Percentage of Entering Class
8. Honors College Fall Semester Enrollment
9. Transfer Students Source of Enrollments
10. Undergraduate Enrollment Mix
11. New Graduate Enrollment by Geographic Residency
12. New Graduate Professional Enrollment by Geographic Residency
13. New Graduate Professional Enrollment by Geographic Residency (With MSU College of Law)
14. Graduate Enrollment Mix
15. Graduate Professional Enrollment Mix
16. Graduate Professional Enrollment Mix (With MSU College of Law)
17. Race/Ethnicity Changes 2010-11
18. Entering Class by Ethnic Groups - 1999-2009
19. Entering Class by Race/Ethnicity – 2010-2011
20. Entering Class Race/Ethnicity – Alternate View
21. Total Enrollment by Ethnic Groups - 1999-2009
22. Total Enrollment by Race/Ethnicity – 2010-2011
23. Total Enrollment Race/Ethnicity – Alternate View
24. Total Enrollment by Ethnic Groups (With MSU College of Law) - 1999-2009
25. Total Enrollment by Race/Ethnicity (With MSU College of Law) - 2010
26. Enrollment Mix
27. Enrollment Mix (With MSU College of Law)
28. MSU College of Law Full Time Applications, Admits, Enrollments and Entering Class Profile
29. MSU College of Law Part Time Applications, Admits, Enrollments and Entering Class Profile
30. MSU College of Law Total Enrollments



# FALL SEMESTER TOTAL ENROLLMENT TREND

	<u>MSU</u>	<u>MSU WITH LAW</u>
Fall 2000	43,366	44,070
Fall 2001	44,227	45,007
Fall 2002	44,937	45,756
Fall 2003	44,542	45,550
Fall 2004	44,836	45,930
Fall 2005	45,166	46,209
Fall 2006	45,520	46,454
Fall 2007	46,045	47,039
Fall 2008	46,648	47,612
Fall 2009	47,278	48,233
Fall 2010	47,131	48,019
Fall 2011*	47,800	48,761

\*Preliminary



# ENTERING CLASS ENROLLMENT MIX

	Fall	Fall	Fall	Fall	Fall	Fall	Fall	Fall	Fall	Fall	Fall
	2001	2002	2003	2004	2005	2006	2007	2008	2009	2010	2011*
Female	3,885	3,964	3,961	4,108	4,185	4,107	4,111	4,117	3,884	3,838	4,125
%	57.0%	57.0%	57.4%	55.4%	57.2%	56.6%	55.8%	55.8%	53.5%	53.3%	52.8%
Non-Michigan	714	802	848	822	883	1,075	1,202	1,409	1,516	1,407	1,905
%	10.5%	11.5%	12.3%	11.1%	12.1%	14.8%	16.3%	19.1%	20.9%	19.5%	24.4%
Entering Class											
Total	6,810	6,949	6,905	7,412	7,314	7,256	7,373	7,378	7,255	7,206	7,815

Entering Class includes Summer First Time Undergraduates

\*Preliminary



# FIRST TIME UNDERGRADUATE APPS, ADMITS AND ENROLLMENTS

	2001	2002	2003	2004	2005	2006	2007	2008	2009	2010	2011*
<b>Apps</b>	24,246	25,210	24,973	21,834	21,844	23,247	24,436	25,589	25,349	26,907	28,547
<b>Admits</b>	15,812	16,977	17,690	17,343	16,686	17,046	18,040	17,919	18,383	18,829	20,751
<b>Enrollments</b>	6,767	6,886	6,849	7,362	7,266	7,210	7,318	7,337	7,209	7,174	7,775
<b>Entering Class</b>	6,810	6,949	6,905	7,412	7,314	7,256	7,373	7,378	7,255	7,206	7,815
<b>Admit Ratio</b>	65.2%	67.3%	70.8%	79.4%	76.4%	73.3%	73.8%	70.0%	72.5%	70.0%	72.7%
<b>Yield</b>	42.8%	40.6%	38.7%	42.4%	43.5%	42.3%	40.6%	40.9%	39.2%	38.1%	37.5%

Note that MSU's application changed in Fall 2004 to include a required personal statement  
Enrollments do not include Summer First time Undergraduates  
Entering Class includes Summer First Time Undergraduates

\*Preliminary





# FIRST TIME UNDERGRADUATE ACADEMIC PROFILE

	2001	2002	2003	2004	2005	2006	2007	2008	2009	2010	2011*	% 10 Yr Chg
<b>GPA</b>												
Mean (average)	3.52	3.55	3.58	3.55	3.58	3.61	3.59	3.61	3.60	3.61	3.61	2.6%
Q3 (75th percentile)	3.78	3.79	3.83	3.80	3.82	3.84	3.83	3.85	3.85	3.84	3.85	1.9%
Median (50th percentile)	3.54	3.58	3.61	3.56	3.60	3.63	3.62	3.64	3.64	3.63	3.64	2.8%
Q1 (25th percentile)	3.31	3.35	3.39	3.33	3.39	3.43	3.41	3.44	3.41	3.42	3.43	3.6%
<b>SAT COMBINED</b>												
Mean (average)	1,132	1,131	1,146	1,135	1,146	1,152	1,131	1,144	1,146	1,132	1,123	-0.8%
Q3 (75th percentile)	1,240	1,240	1,260	1,240	1,260	1,270	1,240	1,260	1,250	1,250	1,210	-2.4%
Median (50th percentile)	1,130	1,130	1,150	1,130	1,150	1,150	1,130	1,130	1,140	1,120	1,110	-1.8%
Q1 (25th percentile)	1,030	1,020	1,040	1,030	1,030	1,040	1,020	1,030	1,030	1,030	1,020	-1.0%
<b>ACT COMPOSITE</b>												
Mean (average)	24.0	24.2	24.5	24.3	24.4	24.6	24.9	24.8	25.0	25.4	25.3	5.4%
Q3 (75th percentile)	27	27	27	27	27	27	27	27	27	28	27	0.0%
Median (50th percentile)	24	24	25	24	24	25	25	25	25	25	24	0.0%
Q1 (25th percentile)	22	22	22	22	22	22	23	23	23	23	23	4.5%

\*Preliminary



# FIRST TIME UNDERGRADUATE ACADEMIC PROFILE – LOWER QUARTILE

	2001	2002	2003	2004	2005	2006	2007	2008	2009	2010	2011*	% 10 Yr Chg
<b>GRADE-POINT- AVERAGE</b>												
25th percentile	3.31	3.35	3.39	3.33	3.39	3.43	3.44	3.44	3.41	3.42	3.43	3.6%
10th percentile	3.08	3.09	3.15	3.12	3.14	3.18	3.20	3.19	3.14	3.17	3.16	2.6%
5th percentile	2.91	2.90	2.95	2.96	2.95	2.98	3.00	2.98	2.95	2.98	2.96	1.7%

## ACT COMPOSITE

25th percentile	22	22	22	22	22	22	23	23	23	23	23	4.5%
10th percentile	19	19	19	19	20	20	21	20	20	21	21	10.5%
5th percentile	18	18	18	18	18	18	19	18	18	19	19	5.6%

\*Preliminary



# NEW CAAP AS A PERCENTAGE OF ENTERING CLASS

	2001	2002	2003	2004	2005	2006	2007	2008	2009	2010	2011*
CAAP	425	474	482	536	624	574	625	679	702	635	635
ENTERING CLASS	6,810	6,949	6,905	7,412	7,314	7,256	7,373	7,378	7,255	7,206	7,815
% CAAP	6.2%	6.8%	7.0%	7.2%	8.5%	7.9%	8.5%	9.2%	9.7%	8.8%	8.1%

\*Preliminary



# HONORS COLLEGE FALL SEMESTER ENROLLMENT

	2001	2002	2003	2004	2005	2006	2007	2008	2009	2010	2011*
<b>New Honors</b>	489	431	491	447	477	491	465	499	490	493	485
<b>% Entering Class</b>	7.2%	6.2%	7.1%	6.0%	6.5%	6.8%	6.3%	6.8%	6.8%	6.8%	6.2%
<b>Total Honors</b>	2,286	2,398	2,574	2,699	2,662	2,669	2,683	2,770	2,664	2,701	2,725
<b>% Undergraduate</b>	6.6%	6.8%	7.4%	7.6%	7.5%	7.5%	7.4%	7.6%	7.3%	7.5%	7.4%
<b>New Academic Scholars</b>	119	175	215	216	196	209	233	192	196	170	160
<b>% Entering Class</b>	1.7%	2.5%	3.1%	2.9%	2.7%	2.9%	3.2%	2.6%	2.7%	2.4%	2.0%
<b>Entering Class</b>	6,810	6,949	6,905	7,412	7,314	7,256	7,373	7,378	7,255	7,206	7,815
<b>Undergraduate</b>	34,874	35,197	34,853	35,408	35,650	35,821	36,072	36,337	36,489	36,058	36,580

\*Preliminary



# TRANSFER STUDENTS SOURCE OF ENROLLMENTS

	2001	2002	2003	2004	2005	2006	2007	2008	2009	2010	2011*
<b>Two Year Institutions</b>	1,049	932	955	949	904	865	834	846	832	899	950
<b>Four Year Institutions</b>	825	700	690	733	607	615	567	627	714	549	580
<b>Total</b>	1,874	1,632	1,645	1,682	1,511	1,480	1,401	1,473	1,546	1,448	1,530
<b>% Two Year</b>	56.0%	57.1%	58.1%	56.4%	59.8%	58.4%	59.5%	57.4%	53.8%	62.1%	62.1%

\*Preliminary



# UNDERGRADUATE ENROLLMENT MIX

	Fall 2001	Fall 2002	Fall 2003	Fall 2004	Fall 2005	Fall 2006	Fall 2007	Fall 2008	Fall 2009	Fall 2010	Fall 2011*
<b>Female</b>	18,631	18,776	18,664	18,796	19,118	19,264	19,205	19,264	19,096	18,708	18,970
<b>%</b>	53.4%	53.3%	53.6%	53.1%	53.6%	53.8%	53.2%	53.0%	52.3%	51.9%	51.9%
<b>Non-Michigan</b>	3,010	3,192	3,392	3,557	3,731	4,014	4,452	5,110	5,655	5,931	6,590
<b>%</b>	8.6%	9.1%	9.7%	10.0%	10.5%	11.2%	12.3%	14.1%	15.5%	16.4%	18.0%
<b>Undergraduate</b>											
<b>Total</b>	34,874	35,197	34,853	35,408	35,678	35,821	36,072	36,337	36,489	36,058	36,580

\*Preliminary



# NEW GRADUATE ENROLLMENT BY GEOGRAPHIC RESIDENCY

	2001	2002	2003	2004	2005	2006	2007	2008	2009	2010	2011*
<b>In State</b>	781	836	813	707	798	886	848	878	843	807	865
<b>Non-Michigan</b>	783	854	793	803	825	792	786	859	958	841	905
<b>Total</b>	1,564	1,690	1,606	1,510	1,623	1,678	1,634	1,737	1,801	1,648	1,770
<b>In State</b>	49.9%	49.5%	50.6%	46.8%	49.2%	52.8%	51.9%	50.5%	46.8%	49.0%	48.9%
<b>Non-Michigan</b>	50.1%	50.5%	49.4%	53.2%	50.8%	47.2%	48.1%	49.5%	53.2%	51.0%	51.1%
<b>Total</b>	100.0%	100.0%	100.0%	100.0%	100.0%	100.0%	100.0%	100.0%	100.0%	100.0%	100.0%

\*Preliminary

Note: Data includes only new Masters and PhD students



# NEW GRADUATE PROFESSIONAL ENROLLMENT BY GEOGRAPHIC RESIDENCY

	2001	2002	2003	2004	2005	2006	2007	2008	2009	2010	2011*
<b>In State</b>	280	295	293	300	361	346	372	389	481	506	500
<b>Non-Michigan</b>	47	55	64	70	59	74	104	85	94	121	120
<b>Total</b>	327	350	357	370	420	420	476	474	575	627	620
<b>In State</b>	85.6%	84.3%	82.1%	81.1%	86.0%	82.4%	78.2%	82.1%	83.7%	80.7%	80.6%
<b>Non-Michigan</b>	14.4%	15.7%	17.9%	18.9%	14.0%	17.6%	21.8%	17.9%	16.3%	19.3%	19.4%
<b>Total</b>	100.0%	100.0%	100.0%	100.0%	100.0%	100.0%	100.0%	100.0%	100.0%	100.0%	100.0%

\*Preliminary



# NEW GRADUATE PROFESSIONAL ENROLLMENT BY GEOGRAPHIC RESIDENCY (WITH MSU COLLEGE OF LAW)

	2001	2002	2003	2004	2005	2006	2007	2008	2009	2010	2011*
<b>In State</b>	485	460	554	521	530	518	608	546	630	634	646
<b>Non-Michigan</b>	92	186	179	181	170	171	260	217	228	284	281
<b>Total</b>	577	646	733	702	700	689	868	763	858	918	927
<b>In State</b>	84.1%	71.2%	75.6%	74.2%	75.7%	75.2%	70.0%	71.6%	73.4%	69.1%	69.7%
<b>Non-Michigan</b>	15.9%	28.8%	24.4%	25.8%	24.3%	24.8%	30.0%	28.4%	26.6%	30.9%	30.3%
<b>Total</b>	100.0%	100.0%	100.0%	100.0%	100.0%	100.0%	100.0%	100.0%	100.0%	100.0%	100.0%

\*Preliminary



# GRADUATE ENROLLMENT MIX

	Fall 2001	Fall 2002	Fall 2003	Fall 2004	Fall 2005	Fall 2006	Fall 2007	Fall 2008	Fall 2009	Fall 2010	Fall 2011*
<b>Female</b>	4,392	4,578	4,614	4,490	4,552	4,575	4,617	4,795	4,969	4,995	5,000
<b>%</b>	55.1%	54.8%	55.5%	55.8%	56.9%	56.5%	55.9%	56.5%	56.5%	56.1%	56.2%
<b>Non-Michigan</b>	3,574	3,799	3,869	3,796	3,769	3,980	4,149	4,206	4,364	4,390	4,385
<b>%</b>	44.8%	45.5%	46.6%	47.2%	47.1%	49.1%	50.2%	49.5%	49.6%	49.3%	49.3%
<b>Graduate</b>											
<b>Total</b>	7,975	8,349	8,309	8,040	7,996	8,099	8,265	8,489	8,796	8,898	8,900

\*Preliminary

Note: Data includes all students at the graduate level.



# GRADUATE PROFESSIONAL ENROLLMENT MIX

	Fall 2001	Fall 2002	Fall 2003	Fall 2004	Fall 2005	Fall 2006	Fall 2007	Fall 2008	Fall 2009	Fall 2010	Fall 2011*
Female	855	857	871	885	919	986	1,034	1,070	1,136	1,199	1,240
%	62.0%	61.6%	63.1%	63.8%	61.6%	61.6%	60.5%	58.7%	57.0%	55.1%	53.4%
Non-Michigan	185	200	211	223	238	260	312	321	348	392	410
%	13.4%	14.4%	15.3%	16.1%	16.0%	16.3%	18.3%	17.6%	17.5%	18.0%	17.7%
Graduate Professional Total	1,378	1,391	1,380	1,388	1,492	1,600	1,708	1,822	1,993	2,175	2,320

\*Preliminary



# GRADUATE PROFESSIONAL ENROLLMENT MIX (WITH MSU COLLEGE OF LAW)

	Fall	Fall	Fall	Fall	Fall	Fall	Fall	Fall	Fall	Fall	Fall
	2001	2002	2003	2004	2005	2006	2007	2008	2009	2010	2011*
Female	1,199	1,220	1,312	1,369	1,389	1,403	1,454	1,450	1,510	1,580	1,698
%	55.6%	55.2%	54.9%	55.2%	54.8%	55.4%	53.8%	52.0%	51.2%	51.6%	51.8%
Non-Michigan	354	427	503	590	610	594	714	723	759	818	909
%	16.4%	19.3%	21.1%	23.8%	24.1%	23.4%	26.4%	26.0%	25.7%	26.7%	27.7%
Graduate Professional Total	2,158	2,210	2,388	2,482	2,535	2,534	2,702	2,786	2,948	3,063	3,281

\*Preliminary



# Race/Ethnicity 2011-12

The U.S. Department of Education mandated changes to collection and reporting of racial and ethnic data in 2010-11. Two question format: 1) Is respondent Hispanic/Latino? 2) Is the respondent from one or more races?

Categories for reporting are: 1) Nonresident Alien/non-citizens; 2) Race and Ethnicity unknown; and 3) Hispanics of any race. For non-Hispanics only: 4) American Indian or Alaska Native; 5) Asian; 6) Black or African American; 7) Native Hawaiian or Other Pacific Islander; 8) White; or 9) Two or more races.

Trend data continues to be displayed in the old reporting categories which are valid through Fall, 2009. Beginning Fall 2010, new racial/ethnic categories are being used.

Caution should be used in comparing data dealing with race and ethnicity when including the categories. A decline in one race or ethnicity may in fact be caused by respondents choosing to report themselves as two or more races.



# ENTERING CLASS BY ETHNIC GROUPS

	1999	2000	2001	2002	2003	2004	2005	2006	2007	2008	2009
African American	691	711	687	707	649	651	701	639	618	584	623
Asian/Pacific Island	318	402	400	426	393	386	409	433	350	373	402
Chicano/Oth Hispanic	190	183	224	244	216	206	225	228	228	208	214
Native American	49	45	66	57	45	48	52	46	52	39	48
Total Students of Color	1,248	1,341	1,377	1,434	1,303	1,291	1,387	1,346	1,248	1,204	1,287
Unknown/Not Reported	37	43	62	33	48	79	62	92	138	149	142
White	5,194	5,374	5,238	5,340	5,400	5,858	5,663	5,555	5,609	5,417	5,148
Domestic Total	6,479	6,758	6,677	6,807	6,751	7,228	7,112	6,993	6,995	6,770	6,577
International	95	115	133	142	154	184	202	263	378	608	678
Total	6,574	6,873	6,810	6,949	6,905	7,412	7,314	7,256	7,373	7,378	7,255
<b>PERCENT BY TOTAL</b>											
African American	10.5%	10.3%	10.1%	10.2%	9.4%	8.8%	9.6%	8.8%	8.4%	7.9%	8.6%
Asian/Pacific Island	4.8%	5.8%	5.9%	6.1%	5.7%	5.2%	5.6%	6.0%	4.7%	5.1%	5.5%
Chicano/Oth Hispanic	2.9%	2.7%	3.3%	3.5%	3.1%	2.8%	3.1%	3.1%	3.1%	2.8%	2.9%
Native American	0.7%	0.7%	1.0%	0.8%	0.7%	0.6%	0.7%	0.6%	0.7%	0.5%	0.7%
Total Students of Color	19.0%	19.5%	20.2%	20.7%	18.9%	17.4%	19.0%	18.6%	16.9%	16.3%	17.7%
Unknown/Not Reported	0.6%	0.6%	0.9%	0.5%	0.7%	1.1%	0.8%	1.3%	1.9%	2.0%	2.0%
White	79.0%	78.2%	76.9%	76.8%	78.2%	79.0%	77.4%	76.6%	76.1%	73.4%	71.0%
International	1.4%	1.7%	2.0%	2.0%	2.2%	2.5%	2.8%	3.6%	5.1%	8.2%	9.3%
Total	100.0%	100.0%	100.0%	100.1%	100.0%	100.0%	100.0%	100.0%	100.0%	100.0%	100.0%
<b>PERCENT BY DOMESTIC</b>											
African American	10.7%	10.5%	10.3%	10.4%	9.6%	9.0%	9.9%	9.1%	8.8%	8.6%	9.5%
Asian/Pacific Island	4.9%	5.9%	6.0%	6.3%	5.8%	5.3%	5.8%	6.2%	5.0%	5.5%	6.1%
Chicano/Oth Hispanic	2.9%	2.7%	3.4%	3.6%	3.2%	2.9%	3.2%	3.3%	3.3%	3.1%	3.3%
Native American	0.8%	0.7%	1.0%	0.8%	0.7%	0.7%	0.7%	0.7%	0.7%	0.6%	0.7%
Total Students of Color	19.3%	19.8%	20.6%	21.1%	19.3%	17.9%	19.5%	19.2%	17.8%	17.8%	19.6%
Unknown/Not Reported	0.6%	0.6%	0.9%	0.5%	0.7%	1.1%	0.9%	1.3%	2.0%	2.2%	2.2%
White	80.2%	79.5%	78.4%	78.4%	80.0%	81.0%	79.6%	79.4%	80.2%	80.0%	78.3%
Domestic Total	100.0%	100.0%	100.0%	100.0%	100.0%	100.0%	100.0%	100.0%	100.0%	100.0%	100.0%



# ENTERING CLASS BY RACE/ETHNICITY

	2010	2011*
Hispanic (of any race)	281	285
2 or more races	202	215
African American	504	560
Asian	315	310
Native Hawaiian/Other PI	2	5
American Indian/AK Native	15	15
Total Students of color	1,319	1,390
Unknown/Not Reported	66	70
White	5,163	5,345
Domestic Total	6,548	6,805
International	658	1,010
Total	7,206	7,815
<b>PERCENT BY TOTAL</b>		
Total Students of Color	18.3%	17.8%
Unknown/Not Reported	0.9%	0.9%
White	71.6%	68.4%
International	9.1%	12.9%
Total	100.0%	100.0%
<b>PERCENT BY DOMESTIC</b>		
Total Students of Color	20.1%	20.4%
Unknown/Not Reported	1.0%	1.0%
White	78.8%	78.5%
Domestic Total	100.0%	100.0%

\*Preliminary



# ENTERING CLASS RACE/ETHNICITY – ALTERNATE VIEW BREAKOUT OF HISPANIC AND 2 OR MORE RACES – DUPLICATED COUNT\*

	2010		2011	
	Hispanic (of any race)	Two or More Races	Hispanic (of any race)	Two or More Races
Hispanic Only	94	94	84	84
African American	18	103	12	81
Asian	6	74	5	80
Native Hawaiian/Other PI	1	15	2	19
American Indian/AK Native	10	73	6	75
White	166	352	195	200
Unduplicated Count	281	202	285	215
				Total
				395

\*2011 data are preliminary as of 09/02/2011.  
2010 data are official as of 09/28/2010.





# TOTAL ENROLLMENT BY ETHNIC GROUPS

	1999	2000	2001	2002	2003	2004	2005	2006	2007	2008	2009
<b>African American</b>	3,507	3,546	3,639	3,675	3,604	3,484	3,552	3,523	3,408	3,392	3,435
<b>Asian/Pacific Island</b>	1,733	1,883	2,036	2,196	2,283	2,349	2,392	2,388	2,368	2,361	2,407
<b>Chicano/Oth Hispanic</b>	1,073	1,081	1,178	1,220	1,246	1,266	1,317	1,360	1,309	1,337	1,357
<b>Native American</b>	257	261	279	298	287	294	341	310	329	325	324
<b>Total Students of Color</b>	6,570	6,771	7,132	7,389	7,420	7,393	7,602	7,581	7,414	7,415	7,523
<b>Unknown/Not Reported</b>	293	312	375	353	386	455	504	543	744	915	1,052
<b>White</b>	33,427	33,395	33,699	33,993	33,459	33,673	33,765	33,869	34,018	33,809	33,647
<b>Domestic Total</b>	40,290	40,478	41,206	41,735	41,265	41,521	41,871	41,993	42,176	42,139	42,222
<b>International</b>	2,748	2,888	3,021	3,202	3,277	3,315	3,295	3,527	3,869	4,509	5,056
<b>Total</b>	43,038	43,366	44,227	44,937	44,542	44,836	45,166	45,520	46,045	46,648	47,278
<b>PERCENT BY TOTAL</b>											
<b>African American</b>	8.1%	8.2%	8.2%	8.2%	8.1%	7.8%	7.9%	7.7%	7.4%	7.3%	7.3%
<b>Asian/Pacific Island</b>	4.0%	4.3%	4.6%	4.9%	5.1%	5.2%	5.3%	5.2%	5.1%	5.1%	5.1%
<b>Chicano/Oth Hispanic</b>	2.5%	2.5%	2.7%	2.7%	2.8%	2.8%	2.9%	3.0%	2.8%	2.9%	2.9%
<b>Native American</b>	0.6%	0.6%	0.6%	0.7%	0.6%	0.7%	0.8%	0.7%	0.7%	0.7%	0.7%
<b>Total Students of Color</b>	15.3%	15.6%	16.1%	16.4%	16.7%	16.5%	16.8%	16.7%	16.1%	15.9%	15.9%
<b>Unknown/Not Reported</b>	0.7%	0.7%	0.8%	0.8%	0.9%	1.0%	1.1%	1.2%	1.6%	2.0%	2.2%
<b>White</b>	77.7%	77.0%	76.2%	75.6%	75.1%	75.1%	74.8%	74.4%	73.9%	72.5%	71.2%
<b>International</b>	6.4%	6.7%	6.8%	7.1%	7.4%	7.4%	7.3%	7.7%	8.4%	9.7%	10.7%
<b>Total</b>	100.0%	100.0%	100.0%	100.0%	100.0%	100.0%	100.0%	100.0%	100.0%	100.0%	100.0%
<b>PERCENT BY DOMESTIC</b>											
<b>African American</b>	8.7%	8.8%	8.8%	8.8%	8.7%	8.4%	8.5%	8.4%	8.1%	8.0%	8.1%
<b>Asian/Pacific Island</b>	4.3%	4.7%	4.9%	5.3%	5.5%	5.7%	5.7%	5.7%	5.6%	5.6%	5.7%
<b>Chicano/Oth Hispanic</b>	2.7%	2.7%	2.9%	2.9%	3.0%	3.0%	3.1%	3.2%	3.1%	3.2%	3.2%
<b>Native American</b>	0.6%	0.6%	0.7%	0.7%	0.7%	0.7%	0.8%	0.7%	0.8%	0.8%	0.8%
<b>Total Students of Color</b>	16.3%	16.7%	17.3%	17.7%	18.0%	17.8%	18.2%	18.1%	17.6%	17.6%	17.8%
<b>Unknown/Not Reported</b>	0.7%	0.8%	0.9%	0.8%	0.9%	1.1%	1.2%	1.3%	1.8%	2.2%	2.5%
<b>White</b>	83.0%	82.5%	81.8%	81.4%	81.1%	81.1%	80.6%	80.7%	80.7%	80.2%	79.7%
<b>Domestic Total</b>	100.0%	100.0%	100.0%	100.0%	100.0%	100.0%	100.0%	100.0%	100.0%	100.0%	100.0%



# TOTAL ENROLLMENT BY RACE/ETHNICITY

	2010	2011*
Hispanic (of any race) 2 or more races	1,458	1,595
African American	710	840
Asian	3,175	3,110
Native Hawaiian/Other PI	2,070	2,075
American Indian/AK Nat.	26	30
Total Students of Color	201	180
Unknown/Not Reported	7,640	7,830
White	917	830
Domestic Total	33,220	33,310
International	41,777	41,970
Total	5,354	5,830
	47,131	47,800
<b>PERCENT BY TOTAL</b>		
Total Students of Color	16.2%	16.4%
Unknown/Not Reported	1.9%	1.7%
White	70.5%	69.7%
International	11.4%	12.2%
Total	100.0%	100.0%
<b>PERCENT BY DOMESTIC</b>		
Total Students of Color	18.3%	18.7%
Unknown/Not Reported	2.2%	2.0%
White	79.5%	79.4%
Domestic Total	100.0%	100.0%

\*Preliminary



# TOTAL ENROLLMENT RACE/ETHNICITY – ALTERNATE VIEW BREAKOUT OF HISPANIC AND 2 OR MORE RACES – DUPLICATED COUNT\*

	2010		2011	
	Hispanic (of any race)	Two or More Races	Hispanic (of any race)	Two or More Races
Hispanic Only	968		881	
African American	65	235	69	294
Asian	25	311	24	359
Native Hawaiian/Other PI	15	63	14	73
American Indian/AK Native	37	241	37	270
White	437	648	657	767
Unduplicated Count	1,458	710	1,595	840
		<b>Total</b>		<b>Total</b>
		968		881
		300		363
		336		383
		78		87
		278		307
		1,085		1,424

\*2011 data are preliminary as of 09/02/2011.  
2010 data are official as of 09/28/2010



# TOTAL ENROLLMENT BY ETHNIC GROUPS (WITH MSU COLLEGE OF LAW)

	1999	2000	2001	2002	2003	2004	2005	2006	2007	2008	2009
African American	3,559	3,606	3,704	3,723	3,656	3,542	3,598	3,573	3,454	3,431	3,475
Asian/Pacific Island	1,756	1,926	2,085	2,225	2,321	2,399	2,432	2,433	2,419	2,395	2,441
Chicano/Oth Hispanic	1,087	1,096	1,192	1,230	1,258	1,282	1,340	1,385	1,341	1,359	1,378
Native American	264	265	286	303	291	300	352	323	342	337	333
Total Students of Color	6,666	6,893	7,267	7,481	7,526	7,523	7,722	7,714	7,556	7,522	7,627
Unknown/Not Reported	306	324	385	365	396	472	514	564	780	1,015	1,172
White	33,983	33,965	34,334	34,655	34,295	34,574	34,636	34,597	34,775	34,508	34,322
Domestic Total	40,955	41,182	41,986	42,501	42,217	42,569	42,872	42,875	43,111	43,045	43,121
International	2,779	2,888	3,021	3,255	3,333	3,361	3,337	3,579	3,928	4,567	5,112
Total	43,734	44,070	45,007	45,756	45,550	45,930	46,209	46,454	47,039	47,612	48,233

## PERCENT BY TOTAL

African American	8.1%	8.2%	8.2%	8.1%	8.0%	7.7%	7.8%	7.7%	7.3%	7.2%	7.2%
Asian/Pacific Island	4.0%	4.4%	4.6%	4.9%	5.1%	5.2%	5.3%	5.2%	5.1%	5.0%	5.1%
Chicano/Oth Hispanic	2.5%	2.5%	2.6%	2.7%	2.8%	2.8%	2.9%	3.0%	2.9%	2.9%	2.9%
Native American	0.6%	0.6%	0.6%	0.7%	0.6%	0.7%	0.8%	0.7%	0.7%	0.7%	0.7%
Total Students of Color	15.2%	15.6%	16.1%	16.3%	16.5%	16.4%	16.7%	16.6%	16.1%	15.8%	15.8%
Unknown/Not Reported	0.7%	0.7%	0.9%	0.8%	0.9%	1.0%	1.1%	1.2%	1.7%	2.1%	2.4%
White	77.7%	77.1%	76.3%	75.7%	75.3%	75.3%	75.0%	74.5%	73.9%	72.5%	71.2%
International	6.4%	6.6%	6.7%	7.1%	7.3%	7.3%	7.2%	7.7%	8.4%	9.6%	10.6%
Total	100.0%	100.0%	100.0%	100.0%	100.0%	100.0%	100.0%	100.0%	100.0%	100.0%	100.0%

## PERCENT BY DOMESTIC

African American	8.7%	8.8%	8.8%	8.8%	8.7%	8.3%	8.4%	8.3%	8.0%	8.0%	8.1%
Asian/Pacific Island	4.3%	4.7%	5.0%	5.2%	5.5%	5.6%	5.7%	5.7%	5.6%	5.6%	5.7%
Chicano/Oth Hispanic	2.7%	2.7%	2.8%	2.9%	3.0%	3.0%	3.1%	3.2%	3.1%	3.2%	3.2%
Native American	0.6%	0.6%	0.7%	0.7%	0.7%	0.7%	0.8%	0.8%	0.8%	0.8%	0.8%
Total Students of Color	16.3%	16.7%	17.3%	17.6%	17.8%	17.7%	18.0%	18.0%	17.5%	17.5%	17.7%
Unknown/Not Reported	0.7%	0.8%	0.9%	0.9%	0.9%	1.1%	1.2%	1.3%	1.8%	2.4%	2.7%
White	83.0%	82.5%	81.8%	81.5%	81.2%	81.2%	80.8%	80.7%	80.7%	80.2%	79.6%
Domestic Total	100.0%	100.0%	100.0%	100.0%	100.0%	100.0%	100.0%	100.0%	100.0%	100.0%	100.0%



# TOTAL ENROLLMENT BY RACE/ETHNICITY (WITH MSU COLLEGE OF LAW)

	2010	2011*
Hispanic (of any race)	1,493	1,636
2 or more races	717	864
African American	3,239	3,187
Asian	2,096	2,120
Native Hawaiian/Other PI	27	33
American Indian/AK Nat.	214	197
Total Students of Color	7,786	8,037
Unknown/Not Reported	978	893
White	33,851	33,948
Domestic Total	42,615	42,878
International	5,404	5,883
Total	48,019	48,761
<b>PERCENT BY TOTAL</b>		
Total Students of Color	16.2%	16.5%
Unknown/Not Reported	2.0%	1.8%
White	70.5%	69.6%
International	11.3%	12.1%
Total	100.0%	100.0%
<b>PERCENT BY DOMESTIC</b>		
Total Students of Color	18.3%	18.7%
Unknown/Not Reported	2.3%	2.1%
White	79.4%	79.2%
Domestic Total	100.0%	100.0%

\*Preliminary



# ENROLLMENT MIX

	Fall 2001	Fall 2002	Fall 2003	Fall 2004	Fall 2005	Fall 2006	Fall 2007	Fall 2008	Fall 2009	Fall 2010	Fall 2011*
<b>Levels</b>											
<b>Undergraduate</b>	34,874	35,197	34,853	35,408	35,678	35,821	36,072	36,337	36,489	36,058	36,580
<b>%</b>	78.9%	78.3%	78.2%	79.0%	79.0%	78.7%	78.3%	77.9%	77.2%	76.5%	76.5%
<b>Graduate</b>	7,975	8,349	8,309	8,040	7,996	8,099	8,265	8,489	8,796	8,898	8,900
<b>%</b>	18.0%	18.6%	18.7%	17.9%	17.7%	17.8%	17.9%	18.2%	18.6%	18.9%	18.6%
<b>Graduate</b>											
<b>Professional</b>	1,378	1,391	1,380	1,388	1,492	1,600	1,708	1,822	1,993	2,175	2,320
<b>%</b>	3.1%	3.1%	3.1%	3.1%	3.3%	3.5%	3.7%	3.9%	4.2%	4.6%	4.9%
<b>Total</b>	44,227	44,937	44,542	44,836	45,166	45,520	46,045	46,648	47,278	47,131	47,800

\*Preliminary



# ENROLLMENT MIX (WITH MSU COLLEGE OF LAW)

	Fall	Fall	Fall	Fall	Fall	Fall	Fall	Fall	Fall	Fall	Fall
Levels	2001	2002	2003	2004	2005	2006	2007	2008	2009	2010	2011*
Undergraduate	34,874	35,197	34,853	35,408	35,678	35,821	36,072	36,337	36,489	36,058	36,580
%	77.5%	76.9%	76.5%	77.1%	77.2%	77.1%	76.7%	76.3%	75.7%	75.1%	75.0%
Graduate	7,975	8,349	8,309	8,040	7,996	8,099	8,265	8,489	8,796	8,898	8,900
%	17.7%	18.2%	18.2%	17.5%	17.3%	17.4%	17.6%	17.8%	18.2%	18.5%	18.3%
Graduate											
Professional	2,158	2,210	2,388	2,482	2,535	2,534	2,702	2,786	2,948	3,063	3,281
%	4.8%	4.8%	5.2%	5.4%	5.5%	5.5%	5.7%	5.9%	6.1%	6.4%	6.7%
Total	45,007	45,756	45,550	45,930	46,209	46,454	47,039	47,612	48,233	48,019	48,761

\*Preliminary



# MSU College of Law

## Full Time Applications, Admits, Enrollments and Entering Class Profile

	Fall		Fall		Fall		Fall		Fall		Fall	
	2001	2002	2003	2004	2005	2006	2007	2008	2009	2010	2011*	
<b>Full Time:</b>												
<b>Applications</b>	1,043	1,434	2,016	2,151	2,473	2,492	1,622	1,686	2,547	3,277	3,351	
<b>Admits</b>	631	766	854	757	876	1,002	678	883	1,214	1,160	1,151	
<b>Matriculants</b>	200	250	294	243	197	190	193	232	259	278	284	
<b>Mean GPA</b>	3.09	3.16	3.19	3.31	3.30	3.36	3.45	3.43	3.37	3.53	3.55	
<b>75% GPA</b>	3.41	3.51	3.48	3.58	3.66	3.67	3.64	3.65	3.61	3.74	3.74	
<b>25% GPA</b>	2.87	2.91	2.94	3.08	3.04	3.05	3.21	3.16	3.08	3.25	3.27	
<b>Mean LSAT</b>	152	154	156	157	157	157	158	156	156	157	157	
<b>75% LSAT</b>	157	158	159	159	161	160	161	159	159	159	160	
<b>25% LSAT</b>	147	150	152	154	155	155	155	154	153	153	153	

\*Preliminary





# MSU College of Law

## Part Time Applications, Admits, Enrollments and Entering Class Profile

Part Time:	Fall	Fall	Fall	Fall	Fall	Fall	Fall	Fall	Fall	Fall	Fall
	2001	2002	2003	2004	2004	2006	2007	2008	2009	2010	2011*
Applications	157	155	242	249	268	255	315	313	189	194	181
Admits	89	89	142	142	134	139	251	226	52	40	38
Matriculants	50	46	82	89	83	79	200	84	24	23	23
Mean GPA	2.98	3.14	3.14	3.18	3.30	3.26	3.13	3.15	3.06	3.19	3.22
75% GPA	3.39	3.44	3.50	3.54	3.56	3.53	3.39	3.28	3.56	3.64	3.66
25% GPA	2.58	2.92	2.89	2.95	3.07	3.07	2.91	2.87	2.73	2.93	2.93
Mean LSAT	151	153	152	152	152	151	151	150	149	146	145
75% LSAT	156	157	153	155	153	154	153	153	154	149	149
25% LSAT	147	149	149	149	150	149	149	149	145	145	143

\*Preliminary



# MSU College of Law Total Enrollments

	Fall 2001	Fall 2002	Fall 2003	Fall 2004	Fall 2005	Fall 2006	Fall 2007	Fall 2008	Fall 2009	Fall 2010	Fall 2011*
<b>Juris Doctor</b>											
Full Time	596	660	798	873	824	725	684	808	890	830	873
Part Time	184	159	210	221	219	209	310	156	65	58	88
<b>Master of Laws</b>			6	9	6	5	4	3	7	42	40
<b>Master of Jurisprudence</b>					2	2	1	0	0	0	0
<b>JD/Bachelor of Laws</b>			6	3	19	13	13	7	8	5	5

\*Preliminary

